

Administrator's Guide for NETZSCH Remote Access

Contents

NETZSCH Remote Access Components	2
Startup Order of the Remote Access service components.....	2
Configuration	3
Remote Access Setup Tool.....	3
Initial Administrator Password	4
Changing Administrator Password	4
Reset Lost Administrator Password.....	5
Instruments.....	5
Enable or Disable the Remote Access for All Instruments on This Computer	5
Enable or Disable the Remote Access for One Selected Instrument	6
Advanced User Security	6
Access to Remote Access Setup tool on Remote Computer	8
Firewall	9
Settings	9
Ports used.....	10

NETZSCH Remote Access Components

NETZSCH Proteus software contains several components enabling remote access to the NETZSCH instruments:

A. Service:

1. *NETZSCH Remote Access Service*: a Windows service enabling the access to the NETZSCH instruments from remote computers and devices;
2. *NETZSCH Proteus software*: controls the NETZSCH instrument on the measurement computer and communicates with the NETZSCH Remote Access Service.

B. Clients:

1. NETZSCH Instrument Cockpit for Microsoft Windows
<http://www.netzsch.com/n24660> ;
2. NETZSCH Instrument Cockpit for iPad and iPhone
<http://www.netzsch.com/n80379>
3. NETZSCH Instrument Cockpit for Android
www.netzsch.com/n24880 .

Startup Order of the Remote Access service components

Remote Access for NETZSCH instruments work correct when the following start order is ensured:

1. NETZSCH Remote Access Service;
2. Measurement component of the Proteus software package.

This startup order is ensured by default software installation because the NETZSCH Remote Access Service is set to automatic startup type.

In the incorrect startup order the Remote Access service can't communicate correctly with the instruments installed locally on the measurement computer. Instrument Cockpit will not show NETZSCH instruments from this computer.

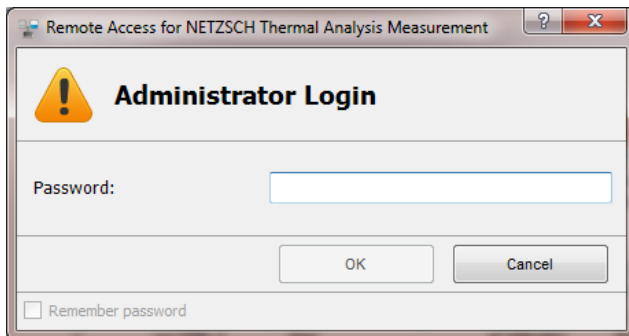
Configuration

Remote Access Setup Tool

The NETZSCH Remote Access configuration can be defined in the Remote Access Setup tool from the Proteus 6.1 (or later) program folder:

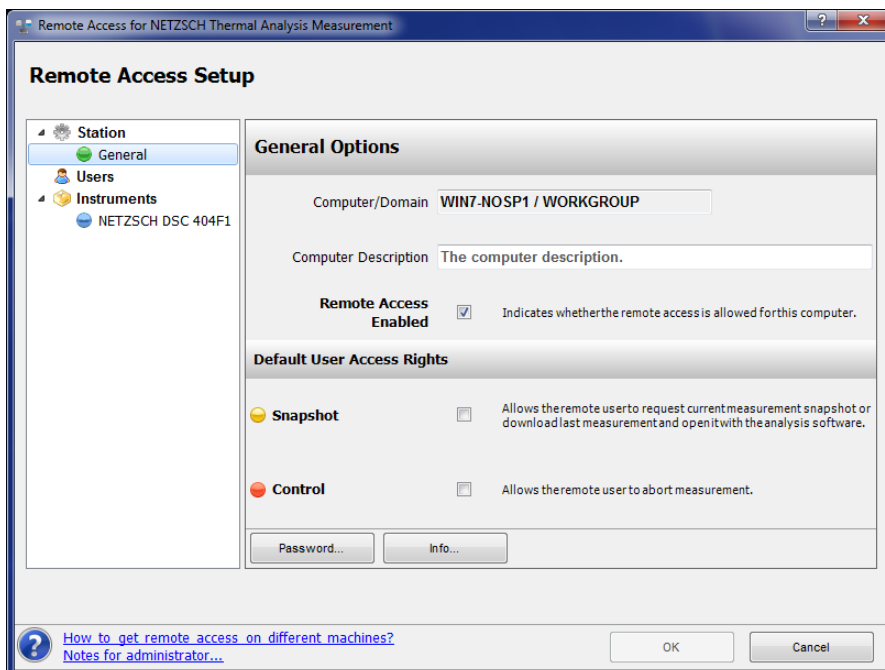


After start the login dialog will be shown:



Initial administrator password is **proteus** .

If the password is correct, the Remote Access Setup toll will be loaded:

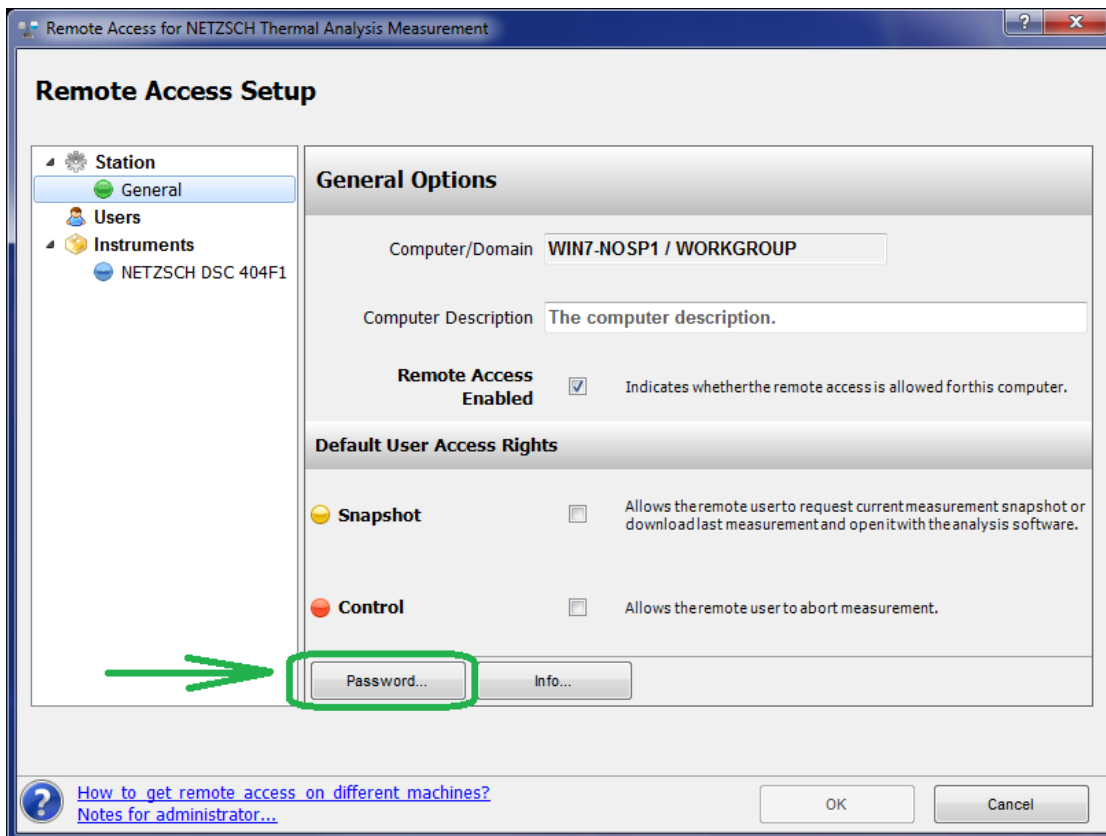


Initial Administrator Password

Initial administrator password is **proteus** (case sensitive).

Changing Administrator Password

Start Remote Access Setup tool and select General item under Station in the toolbox of the left side. The computer name, description and also default user rights will be shown:



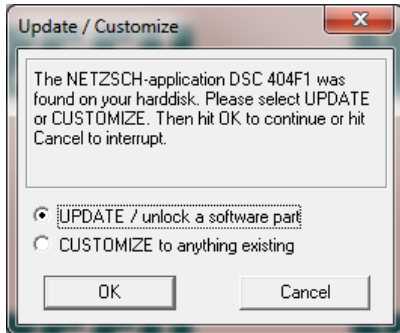
Click on the Password... button. Change Administrator Password form will be shown:



Reset Lost Administrator Password

Lost administrator password can't be restored.

Administrator password can be reset to the delivery default value when any NETZSCH Proteus software instrument AddOn (usually it is delivered on the USB stick) will be installed. Please use the "UPDATE" setting:



After that the administrator password's initial value **proteus** (case sensitive) will be valid for the next login into Remote Access tool.

IMPORTANT: the restored initial password is valid for one login only! Please change the password immediately. Even if you want to use the initial password value in the future, it must be also "changed" (confirmed) during the first login after password reset.

Instruments

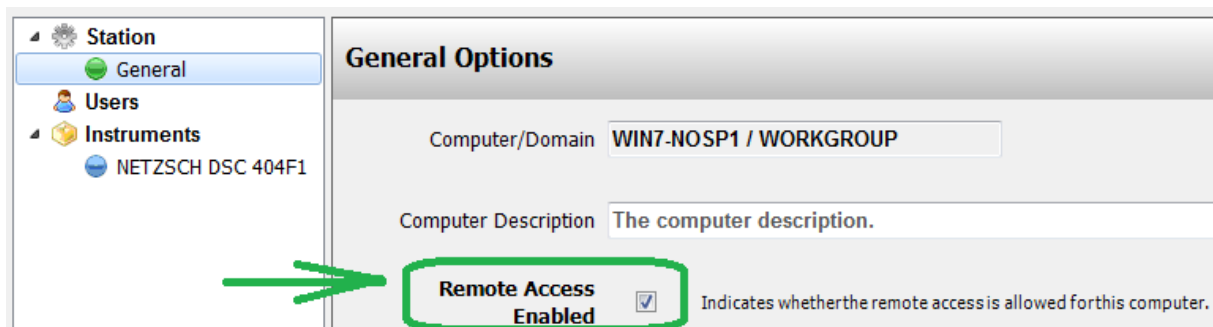
The instrument list in the toolbox contains all instruments installed on this measurement computer, compatible with Remote Access.

It is not possible to add the NETZSCH instruments into this toolbox manually. The instruments are added there during first start the measurement software - so called "First Connection". See instruments manual for details.

Enable or Disable the Remote Access for All Instruments on This Computer

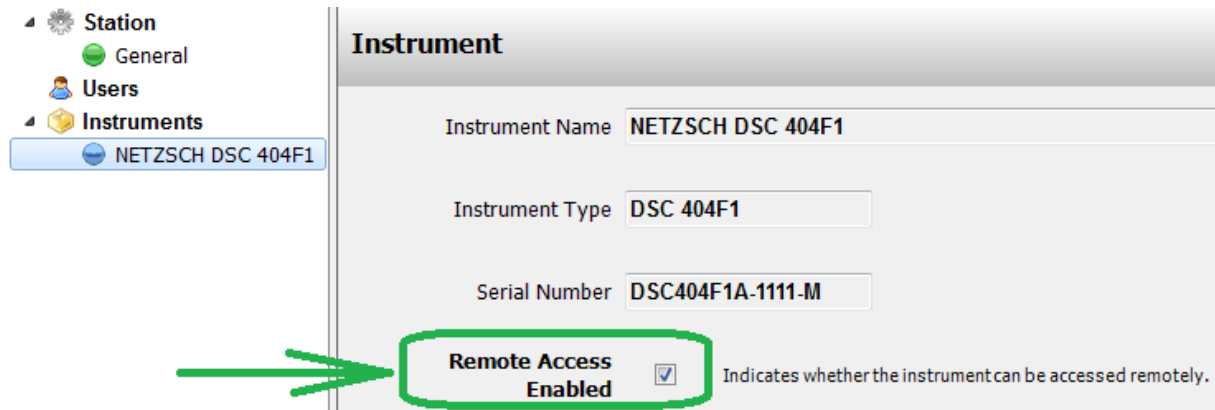
In Remote Access Setup tool select General item under Station node in the toolbox left.

Select or unselect the Remote Access Enabled check box on the General Options panel on the right side for enabling or disabling the remote access to all instruments connected to this computer:



Enable or Disable the Remote Access for One Selected Instrument

In Remote Access Setup in the toolbox select the instrument you want to enable or disable the remote access. In the Instrument panel on the right side for enabling or disabling the remote access to this instrument.



Advanced User Security

User Rights

There are three user rights in Proteus software for the Instrument Cockpit:

1. *View instrument state and signals (called also "View").*
This gives the possibility to see the same information as presented on blue hardware displays on some NETZSCH instruments like DSC, TG, STA or TMA.
2. *Get current measurement data for analysis (called also "Snapshot").*
This gives the possibility to request from Instrument Cockpit the measurement data from this measurement computer to his computer. This measurement data will be sent either as a picture or as a NETZSCH measurement file if the user has Proteus software installed;
3. *Stop the measurement in emergency case (called also "Stop").*
This gives a possibility to stop a wrong running measurement by using Instrument Cockpit from another computer.

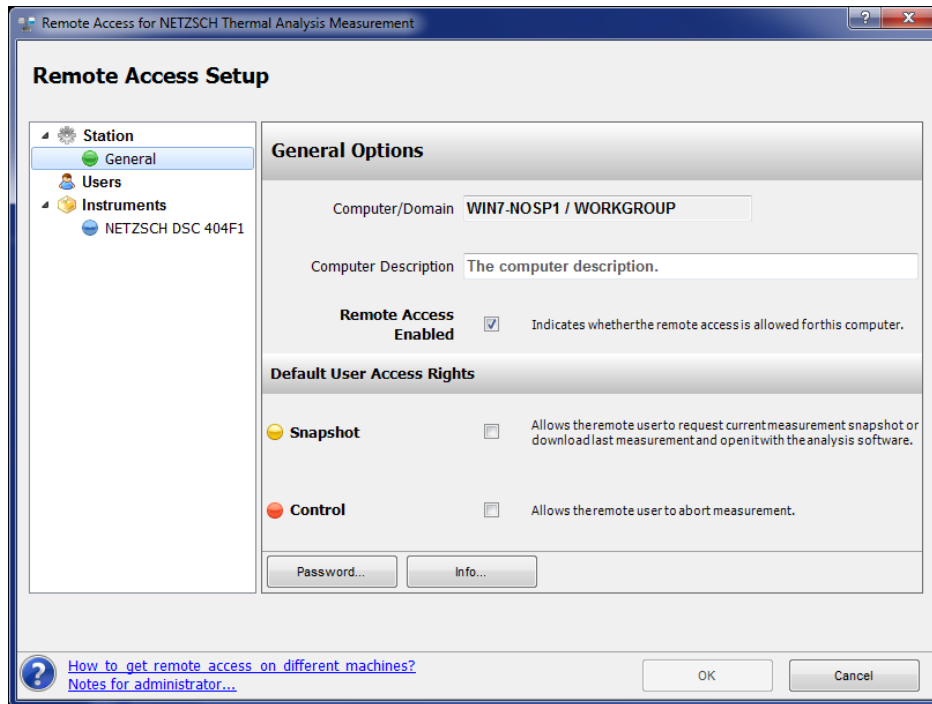
The right (1) have all users.

Rights (2) and (3) can be assigned to:

- Any user accessing this computer;
- A user registered in Remote Access Setup tool on this computer.

Access Rights for All Users

In Remote Access Setup tool select General item under Station in the toolbox on the left side:

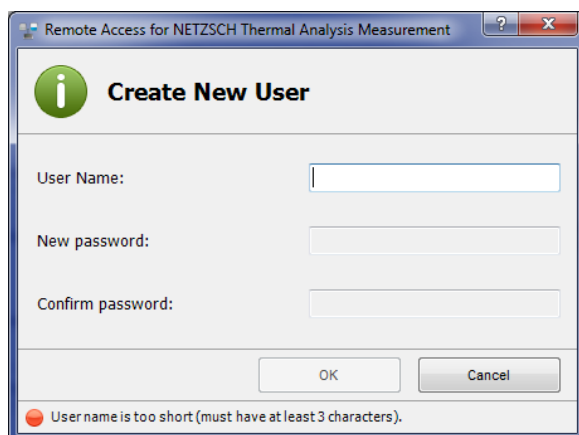


In the right panel Default User Access Rights there are check boxes for two user rights: *Snapshot* and *Stop*. Selecting any of them will give these rights to all users who access this measurement computer from their Instrument Cockpit app.

Adding a User for NETZSCH Remote Access

It is also possible to get the *Snapshot* and *Stop* rights only to specific users. These users must be registered in Remote Access Setup tool first. These users are independent of Windows users and must be defined on all measurement computers they need separately.

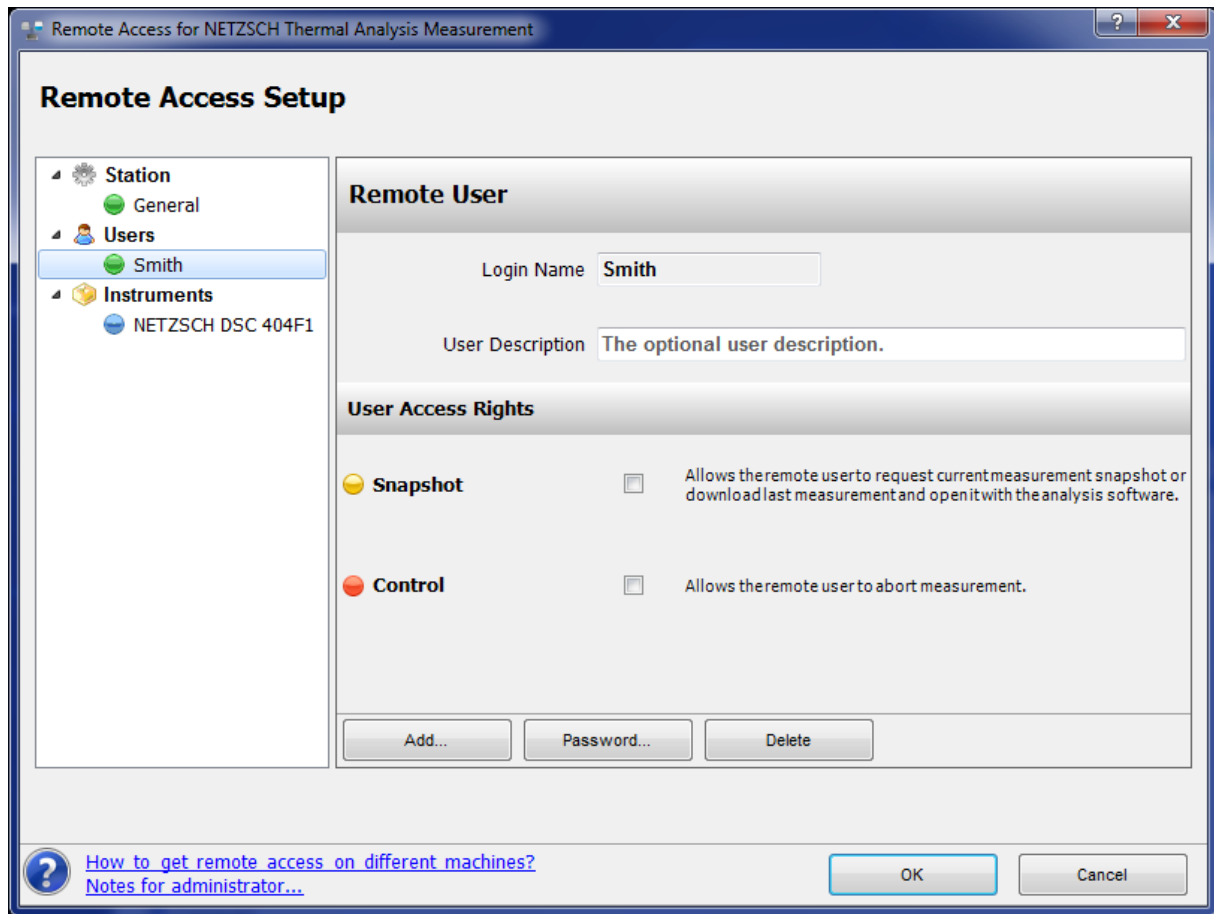
Click on Users item in the toolbox on the left side. The Create new User dialog appears:



Type a user name and password (3 characters at least). After clicking on OK the user will be saved. It will appear also in the toolbox.

Define an Access Right for a Specific User

In Remote Access Setup tool select a user in the toolbox left:



In the User Access Rights panel rights two check boxes defines the access rights for the current user. If no check box is selected – the user has default minimum right *View*.

Select a check box with the right you want to assign to the user and save the changes. The user will see the changes immediately in his Instrument Cockpit software.

Access to Remote Access Setup tool on Remote Computer

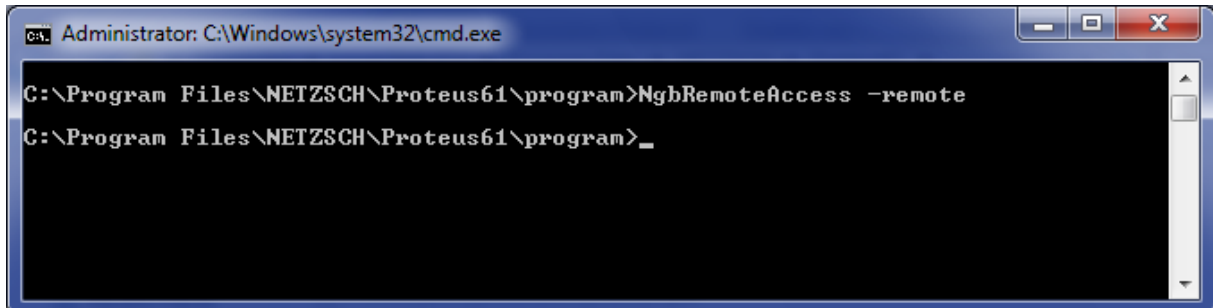
It is possible to start the Remote Access Setup tool on one computer and get access to the remote access settings on another computer with installed Proteus 6.1 or later. Administrator password on remote computer must be known.

The file name of the Remote Access Setup tool is *NgbRemoteAccess.exe* and it is located in:

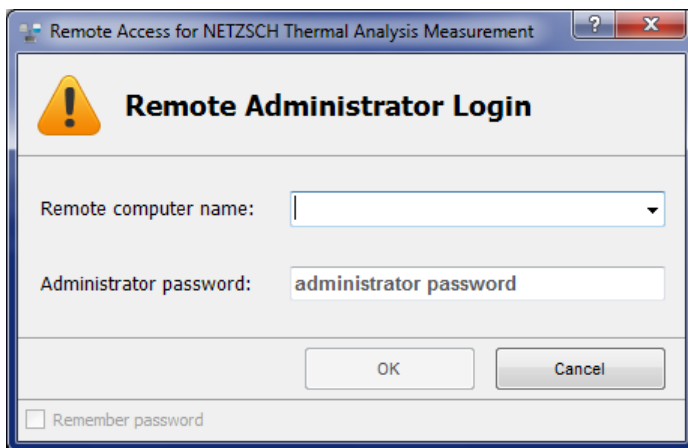
- C:\Program Files\NETZSCH\Proteus61\program (x86 version of Windows);
- C:\Program Files (x86)\NETZSCH\Proteus61\program (x64 version of Windows).

In Command Prompt window start the tool with “-remote” parameter:

NgbRemoteAccess.exe -remote



The remote computer name and administrator password remote computer will be asked:



When remote computer with typed name exists and the computer is accessible in the network, the Remote Access Tool will load all settings from this remote computer.

Firewall

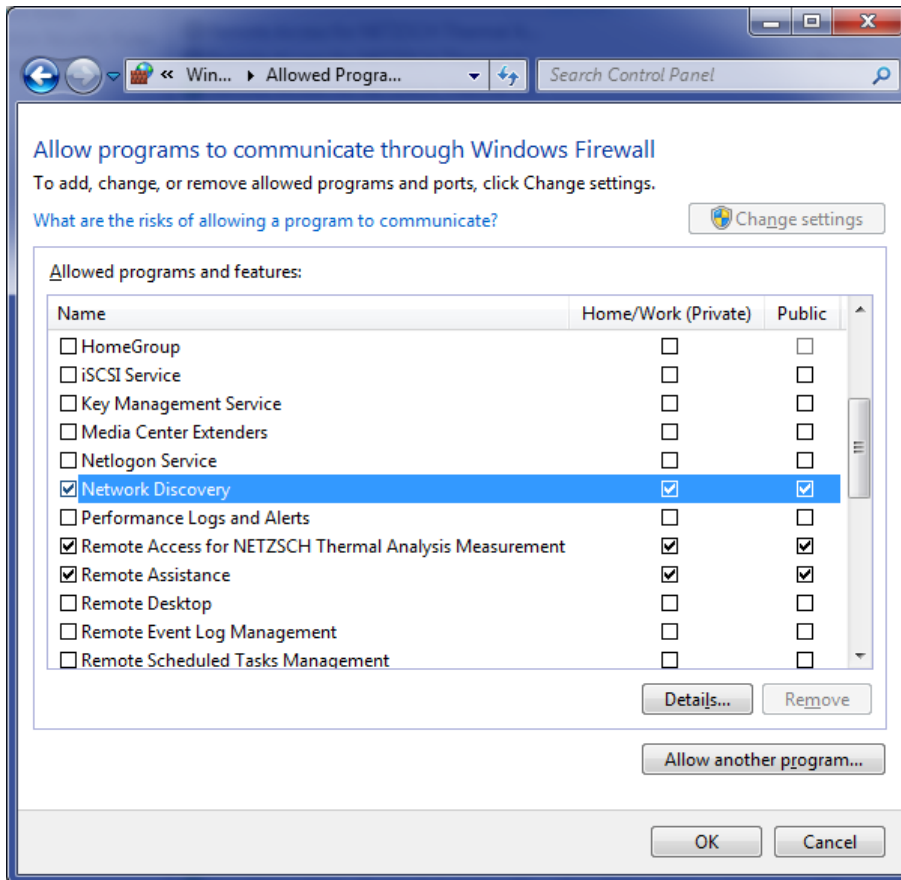
Settings

If the measurement computer is connected to Domain network profile the standard Windows Firewall settings usually allow the communication between NETZSCH Remote Access Service and Instrument Cockpit.

The following programs must be allowed to get through the firewall:

1. Network Discovery;
2. Remote Access for NETZSCH Thermal Analysis Measurement.

The last rule is added during the installation of the NETZSCH Proteus software.



Ports used

The following ports are used:

- HTTP port 80 for mobile clients (versions for iPad or Android);
- TCP port 8085 for Windows client.